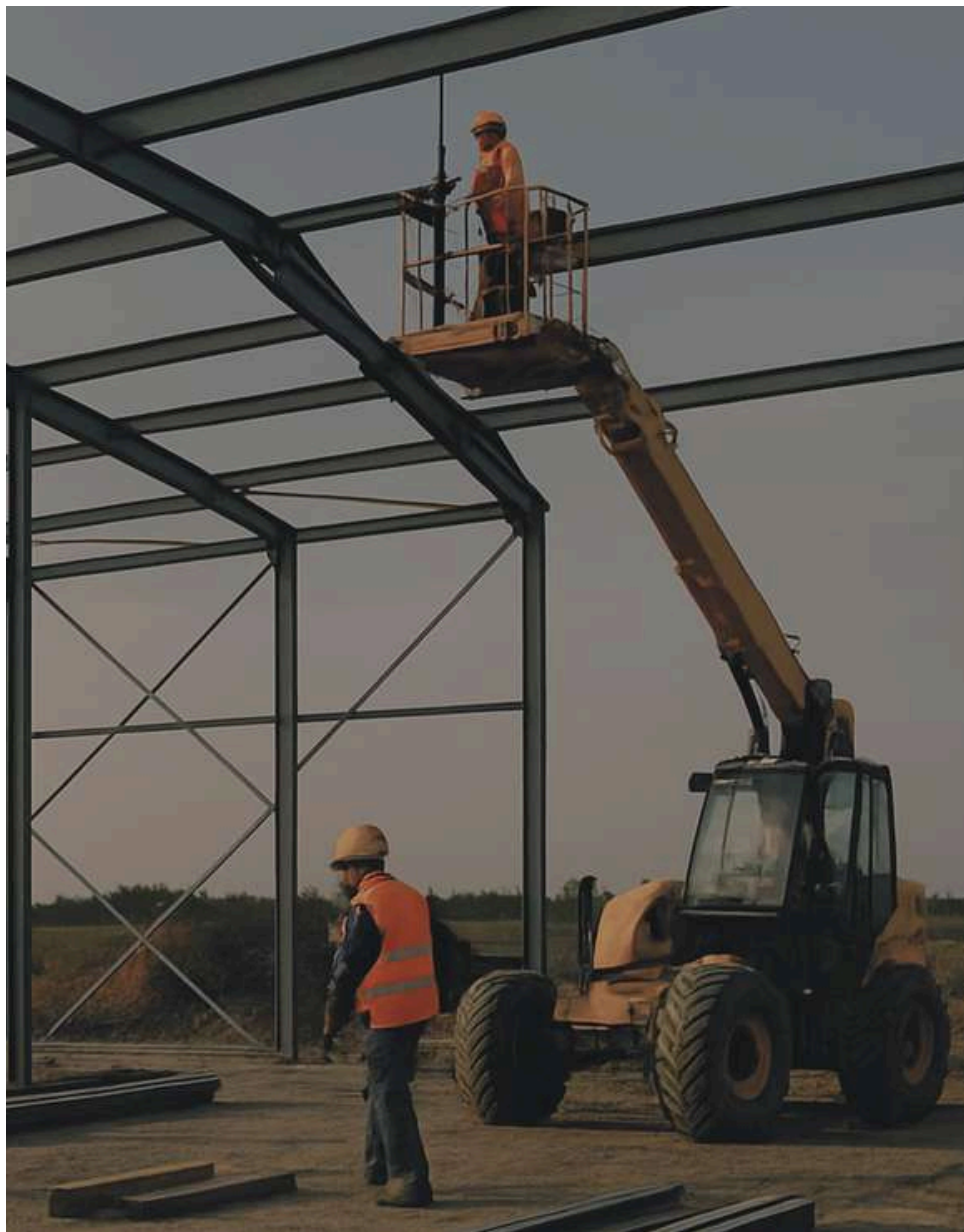




ATLAS
METALWORK

WE TRANSFORM METAL INTO SOLUTIONS.



ABOUT ATLAS METALWORK

Atlas Metalwork is a company specialized in the processing and production of metal structures, with a production capacity of over 150 tons per month. Its team, made up of more than 50 qualified professionals, ensures high standards of quality and efficiency in every project. Atlas Metalwork is part of the Alpha Steel Group, further strengthening the expertise and resources of a strong player in the metallurgical industry.

CERTIFICATIONS

To guarantee the quality and safety of its products, Atlas Metalwork holds internationally recognized certifications that attest to compliance with the strictest industry standards. These certifications confirm both efficient production processes and the company's commitment to innovation, responsibility, and customer satisfaction.



EN 1090

ISO 9001

ISO 14001

ISO 45001

1. STRUCTURES FOR INDUSTRIAL AND COMMERCIAL HALLS



2. TOTEMS



3. STRUCTURES FOR SHIPYARDS



References in the Naval Industry

- Fincantieri through Vard Shipyards
- Damen Shipyards



• FOUNDATIONS FOR EQUIPMENTS

• PLATFORMS & GRATINGS

• RAISED FLOORS

• LIFTING LUGS AND SUPPORT ELEMENTS

• MOORING PONTOONS

• PEDESTALS; DECK GRATINGS; PIPING







Advantages of collaborating with Atlas Metalwork

- **HIGH PRODUCTION CAPACITY & FLEXIBILITY**
- **FAST DELIVERY & COMPETITIVE PRICING**
- **RECOGNIZED INTERNATIONAL CERTIFICATIONS**

- **EXPERIENCE IN NAVAL & INDUSTRIAL PROJECTS**

currently, Atlas Metalwork has ongoing projects with VARD Brăila and VARD Tulcea.

CONTACT

SERBAN THEODOR

contact@atlasmetalwork.ro

0752839843